



Test Your Memory

VSC G4.5.C.2.c, d; G4.5.C.3.a, b

- 11** You are given two magnets whose poles are not marked on them.

How can you tell which pole is which?

- A** use a magnetic compass
- B** see which end of the second magnet is attracted to one end of the first magnet
- C** see which end of the second magnet repels one end of the first magnet
- D** see which end of each magnet will attract more paperclips

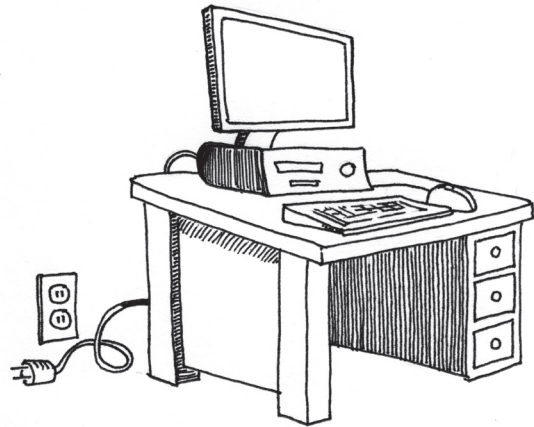
- 12** Which material would most likely be used for the inside of electrical wires?

- A** water
- B** plastic
- C** wood
- D** copper

- 13** Which of the following items commonly found in a kitchen will be attracted to a magnet?

- A** aluminum can
- B** copper pot
- C** glass mug
- D** stainless steel knife

- 14** Below is a picture of a common electrical device.



Based on what you can see in this picture, how would you describe this circuit?

- A** closed circuit
- B** open circuit
- C** parallel circuit
- D** series circuit

- 15** One light bulb in a string of Christmas tree lights burns out and the entire string goes dark.

The string is

- A** a parallel circuit that is closed
- B** a parallel circuit that is open
- C** a series circuit that is closed
- D** a series circuit that is open